

## D-TECT X MKIII Wireless Detectors

The BS8418 D-Tect X Detectors all feature Quad PIR detector modules, stylish IP65 fully tampered housings with new discreet internal antenna. Units accept either 3 'C' type batteries or 12-24V AC/DC, 500m RF transmission range on 868MHz and individual code for pairing to the Receiver (GJD392).

There are now three detectors to choose from:

- GJD430 D-Tect X MKII 30m x 30m
- GJD440 D-Tect X MKII 40m x 4m & 40m x 8m (supplied with 2 lenses)
- GJD450 D-Tect X MKII 50m x 10m

The Receiver (GJD392) can be linked in its base form to 4 detectors and this can then be expanded up to 16 detectors with the use of the GJD393 4-way Expansion Module (see schematic overleaf).

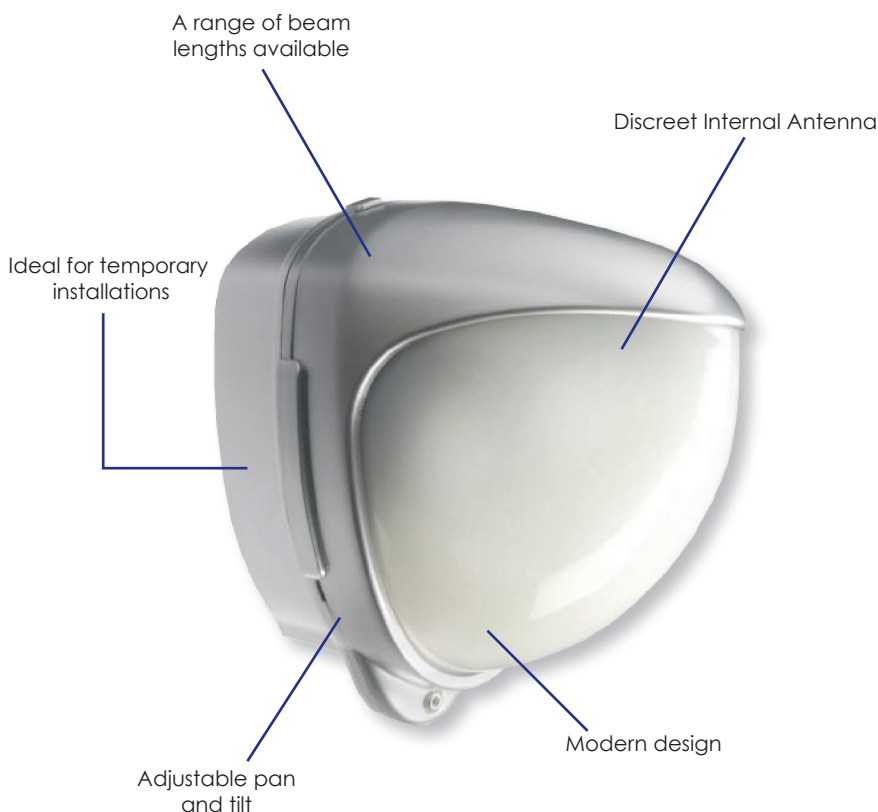
The outputs available from each detector include 2 volt-free relays, 1 for the GJD lighting control system, low battery, tamper and RF loss.

Due to the number of individual detector codes (in excess of 17M) multiple receivers can be used on any site.

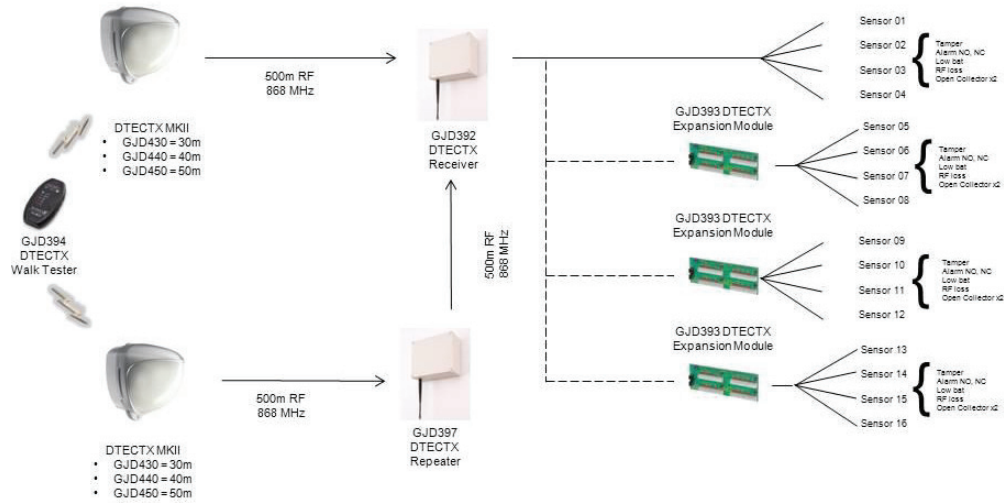


### FEATURES & BENEFITS

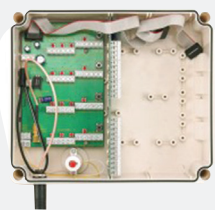
- Modern design
- Fully integrative with Clarius illuminators
- Easy to install and yet highly cost effective
- Adjustable pan and tilt
- Available in a range of beam lengths
- Discreet internal antenna
- Wireless technology
- Ideal for temporary installations
- Twin PIRs



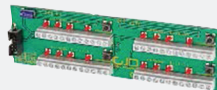
# Product Features



TECHNICAL	GJD430 D-TECT X30 MKII	GJD440 D-TECT X40 MKII	GJD450 D-TECT X50 MKII
<b>Transmission Range</b>	500m Line of sight	500m Line of sight	500m Line of sight
<b>Detection Range</b>	30m x 30m	40m x 4m & 40m x 8m	50m x 10m
<b>Detector Orientation</b>	180° pan & 90° tilt	180° pan & 90° tilt	180° pan & 90° tilt
<b>Mounting Height</b>	Up to 6m - Optimum 3m	Up to 4m - Optimum 3m	Up to 4m - Optimum 3m
<b>Tamper Switches</b>	Front & rear tamper switches, case open and removal from wall	Front & rear tamper switches, case open and removal from wall	Front & rear tamper switches, case open and removal from wall
<b>Outputs from GJD392 D-TECTX Receiver - Per Detector</b>	1 Open Relay: 1 Closed Relay: Tamper; RF Loss; Low Battery, GJD Lighting System.	1 Open Relay: 1 Closed Relay: Tamper; RF Loss; Low Battery, GJD Lighting System.	1 Open Relay: 1 Closed Relay: Tamper; RF Loss; Low Battery, GJD Lighting System.
<b>End of Line Resistance</b>	N/A	N/A	N/A
<b>Power Input</b>	3 x C Batteries or 12-24V AC/DC	3 x C Batteries or 12-24V AC/DC	3 x C Batteries or 12-24V AC/DC
<b>Pulse Count</b>	1 - 3	1 - 2	1 - 2
<b>Photocell</b>	Dusk (2 Lux) to 24 hour	Dusk (2 Lux) to 24 hour	Dusk (2 Lux) to 24 hour
<b>Housing &amp; IP Rating</b>	High Impact ABS IP65	High Impact ABS IP65	High Impact IP65
<b>BS8418 Complaint</b>	Yes	Yes	Yes



GJD392 D-TECT X Receiver



GJD393 D-TECT X Expansion Unit

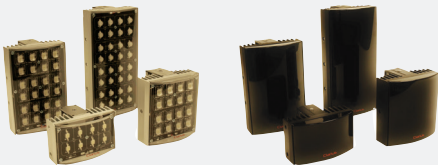


GJD394 D-TECT X Walk Tester



GJD397 D-TECT X Repeater

**Other accessories include GJD308 D-Guard Wire Guard and GJD305 Pole Mount**



**THE GJD D-TECT X MKII RANGE OF WIRELESS DETECTORS INTEGRATE FULLY WITH THE GJD CLARIUS® LED AND WHITE LIGHTING RANGE**

